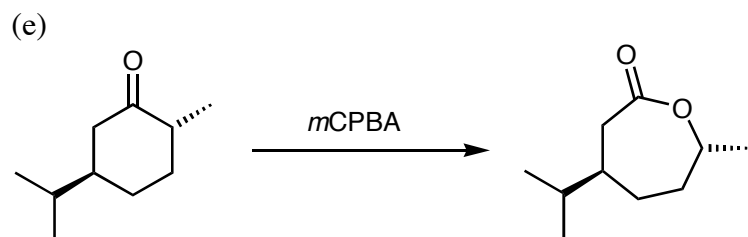
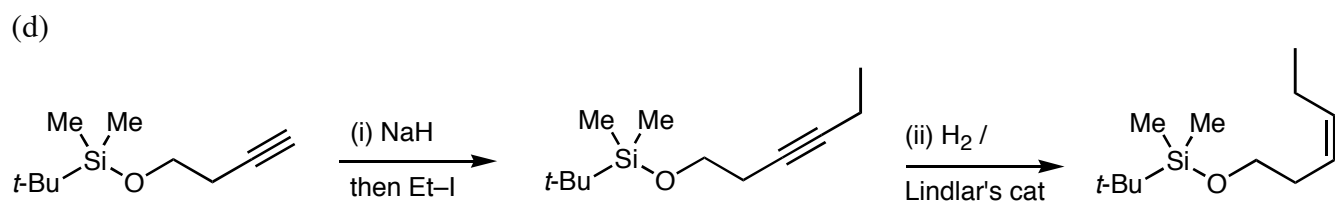
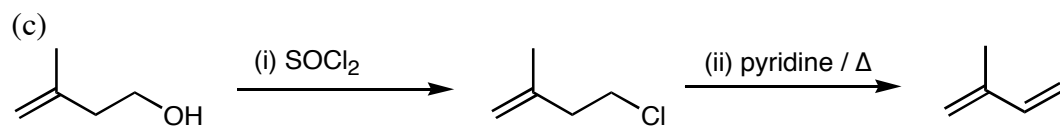
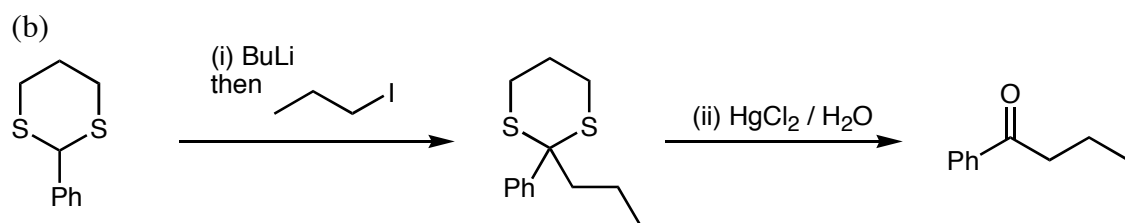
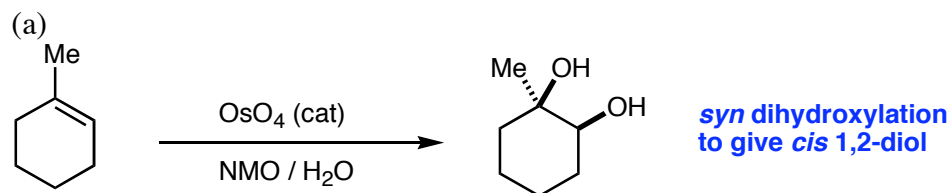
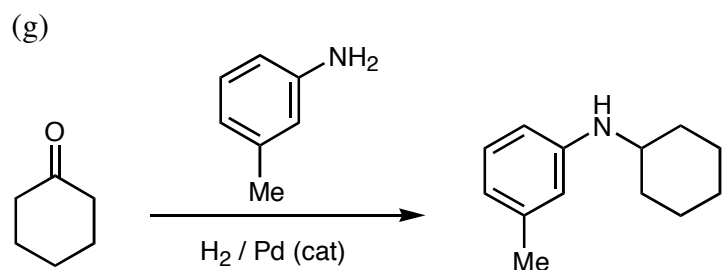
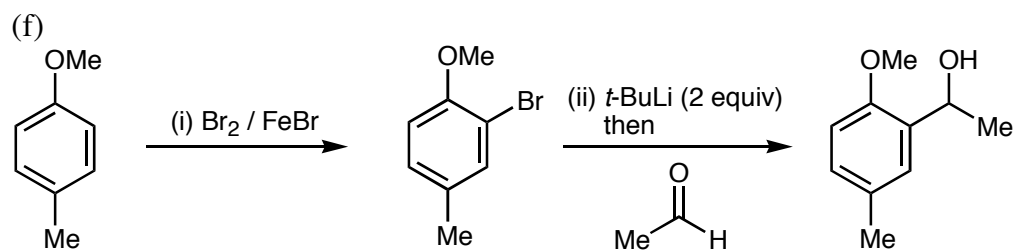


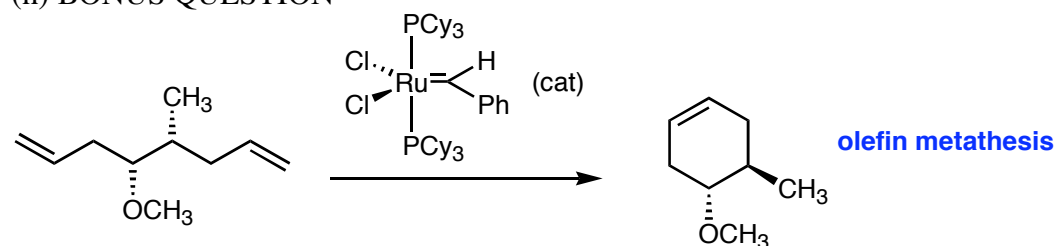
Answer Guide to Examination 2
CHEMISTRY 249S:
March 27th 2008

1.





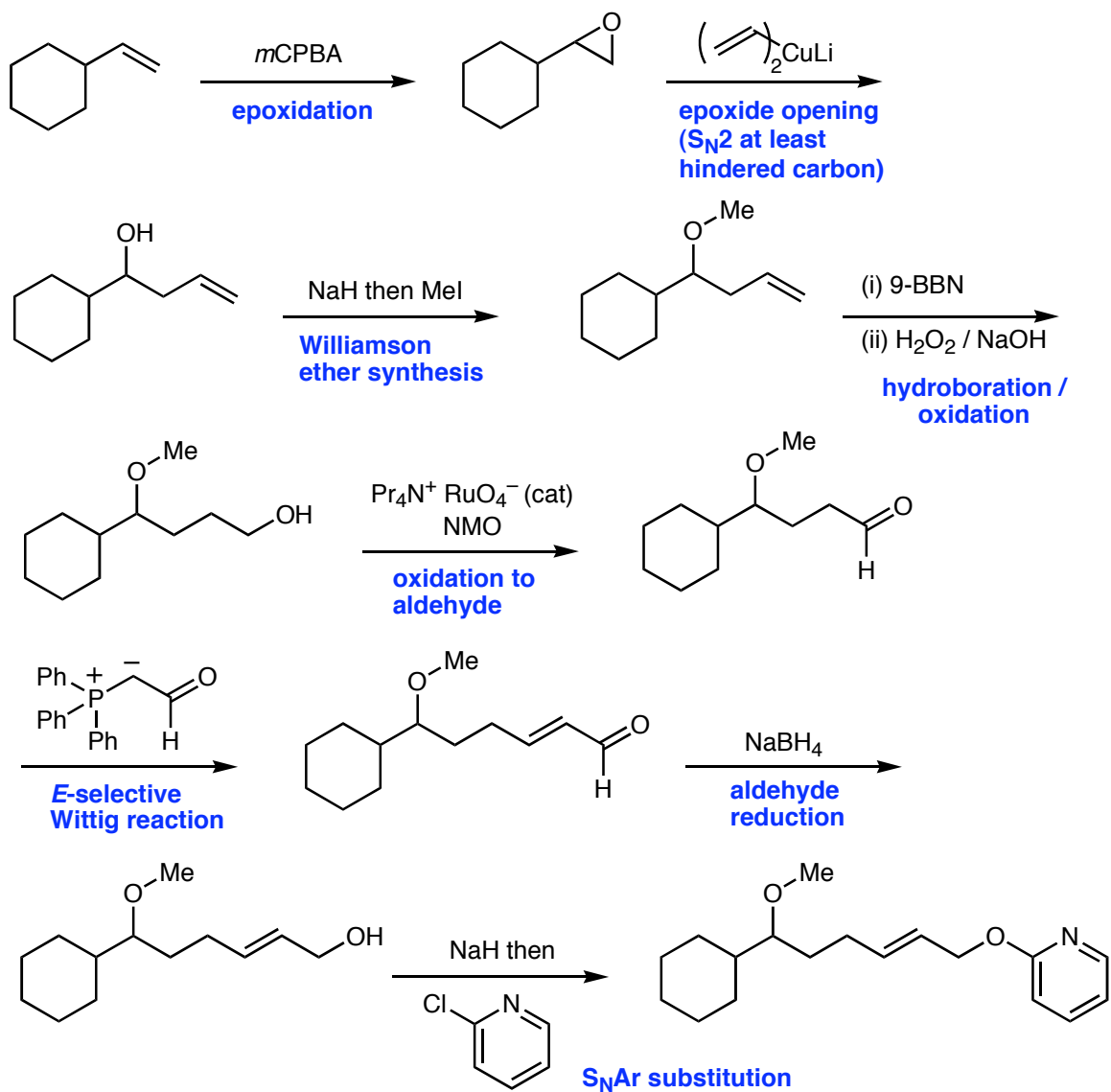
(h) BONUS QUESTION



2. For reaction mechanism of ketal formation, see lecture notes. Note the mechanism is an addition-elimination-addition mechanism, which is acid catalyzed. **It does NOT occur via an addition-substitution mechanism.**

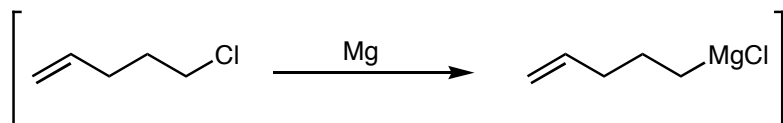
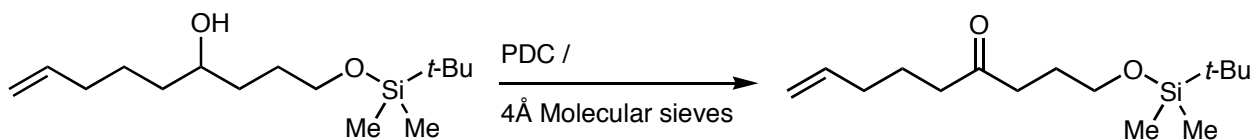
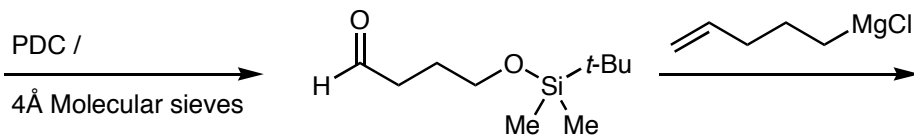
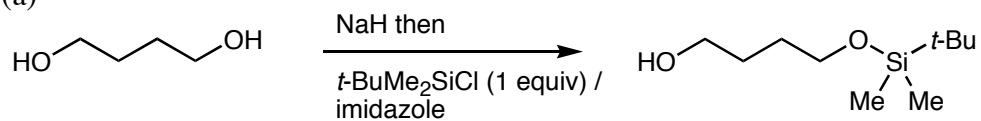
Several of you only gave abbreviated mechanisms condensing one or more steps into a single step. For questions of this kind you must draw your mechanisms IN FULL – with ALL intermediates explicitly shown, and ALL electron pair movements shown by a curved arrows (even for a proton addition/loss)

3.



4.

(a)



(b)

